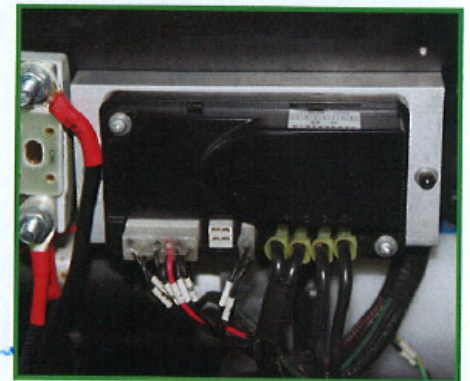


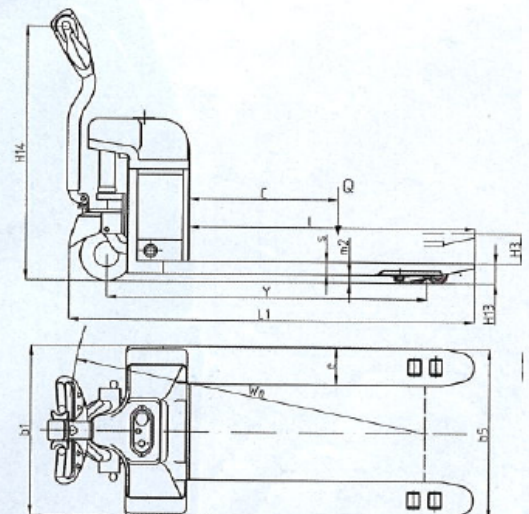
Base	Capacity	Q(Kg)	2000	
	Load center	C(mm)	600	
	Type of lifting		Electric	
	Operating type		Battery-driven	
Wheel	Material		PU	
	Wheel base	Y(mm)	1285	
	Quantity Driving/Balance/Bearing		1 × +2/4	
	Bearing wheel size	mm	Φ80 × 70	
	Driving wheel size	mm	Φ210 × 70	
	Balance wheel size	mm	Φ75 × 35	
Dimension	Min.fork height	H <sub>13</sub> (mm)	85	
	Max.fork height	H <sub>3</sub> (mm)	200	
	Max.lifting height	mm	115	
	Fork outside width	b <sub>5</sub> (mm)	560/685	
	Fork inside width	mm	240/365	
	Fork length	l(mm)	1150	
	Single fork size	e/s(mm)	160/50	
	Overall length	L <sub>1</sub> (mm)	1630	
	Overall width	b <sub>1</sub> (mm)	780	
	Overall height	mm	1170	
	Handle vertical height	h <sub>14</sub> (mm)	1170	
	Min.turning radius	Wa(mm)	1430	
	Performance	Travel speed(laden/unladen)	km/h	3.5-4
		Lifting speed(laden/unladen)	mm/s	25-35/35-45
Lowering speed(laden/unladen)		mm/s	25-30/20-25	
Fast/slow adjustment function			Yes	
Gradeability		%	≤3.5	
Driving mode			DC	
Electrical	Drive motor	Kw	0.65	
	Lift motor	Kw	0.8	
	Battery capacity	V/Ah	2 × 12/55	
	Charger		24V12A	
	Battery weight	Kg	34	
Net weight	Kg	200-210		



Horizontal driving wheel



CURTIS Controller





## Characteristics

- Small body, light weight, can work in a narrow channel;
- All control components are concentrated in the control handle, the operation is simple, no need of professional control;
- High efficiency DC traction motor, traction, speed control, can withstand heavy material handling;
- Speed control selection of stepless speed control system, according to the load of goods, the surrounding environment to control the speed of forward and backward;
- Good power off brake function, handle in the vertical and horizontal direction, the vehicle is in the brake state, effectively prevent the body from sliding, reduce the occurrence of accidents.

